
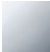


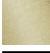
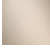




29 210 782

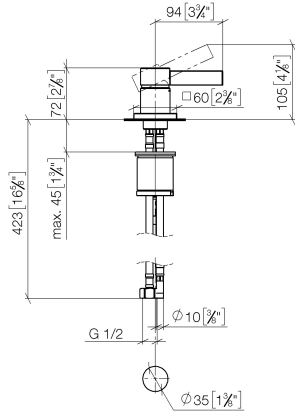


- Bohrungsdurchmesser 35 mm
- Rosette 60 x 60 mm
- 3x Druckschlauch M 10 x 1 eingeschraubt, dichtheitsgeprüft

| | | |
|---|---------------------------------------|---------------|
|  | Platin | 29 210 782-08 |
|  | Chrom | 29 210 782-00 |
|  | Platin gebürstet | 29 210 782-06 |
|  | Dark Chrome | 29 210 782-19 |
|  | Messing gebürstet (23kt Gold) | 29 210 782-28 |
|  | Champagne gebürstet (22kt Gold) | 29 210 782-46 |
|  | Champagne (22kt Gold) | 29 210 782-47 |
|  | Dark Platin gebürstet | 29 210 782-99 |

29 210 782

mm [inches]



Durchflussdiagramm



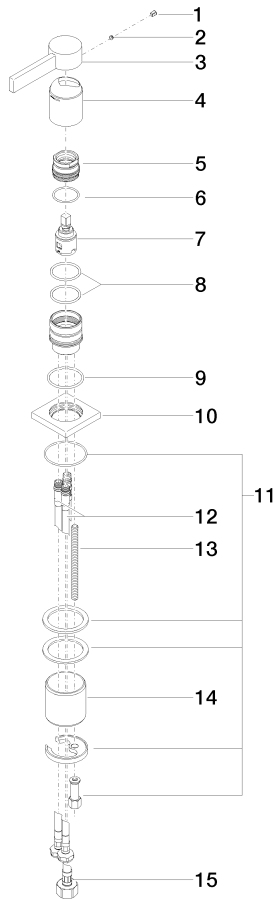
Zertifikate

LGA_28449.

GDV_0400283.

29 210 782

Ersatzteile für die
anderen
Oberflächenvarianten
finden Sie hier:
Chrom



Ersatzteilstückliste

| Nr. | Artikelnummer | Benennung | Verbaumenge | Lieferzeit |
|-----|--------------------|------------------|-------------|------------|
| 1 | 90 31 20 109 00 90 | Stopfen | 1 | 2 |
| 2 | 90 31 11 063 00 90 | Stift | 1 | 2 |
| 3 | 09 20 78 057-08 | Griff | 1 | 40 |
| 4 | 09 11 02 289-08 | Haube | 1 | 40 |
| 5 | 09 24 04 288 90 | Mutter | 1 | 2 |
| 6 | 09 14 10 137 90 | Dichtung | 1 | 2 |
| 7 | 90 15 05 042 00 90 | Kartusche | 1 | 2 |
| 8 | 09 14 10 192 90 | Dichtung | 2 | 2 |
| 9 | 09 14 10 067 90 | Dichtung | 1 | 2 |
| 10 | 09 27 78 040-08 | Rosette | 1 | 40 |
| 11 | 04 30 11 038 02 90 | Befestigungssatz | 1 | 2 |
| 12 | 04 30 04 104 00 90 | Schlauch | 2 | 2 |
| 13 | 09 31 11 012 90 | Stift | 1 | 2 |
| 14 | 09 18 40 079 90 | Huelse | 1 | 2 |
| 15 | 04 30 04 019 00 90 | Schlauch | 1 | 2 |